



**October—December 2010**  
**Fast Facts**

Rates of breastfeeding initiation increased but rates of breastfeeding continuation at 4 months decreased from 2000 to 2007.

Although breastfeeding initiation has improved in Louisiana from 1998 to 2007, it is still lower than the national average (74% in 2006, National Immunization Survey) and Healthy People 2010 Objective (75%).

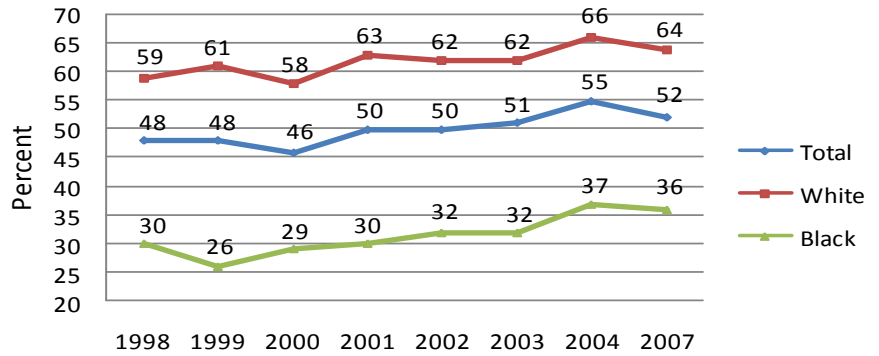
WIC participation during pregnancy was negatively associated with both breastfeeding initiation and continuation.

Women participating in WIC during pregnancy were more likely not to initiate breastfeeding and more likely to discontinue breastfeeding early.

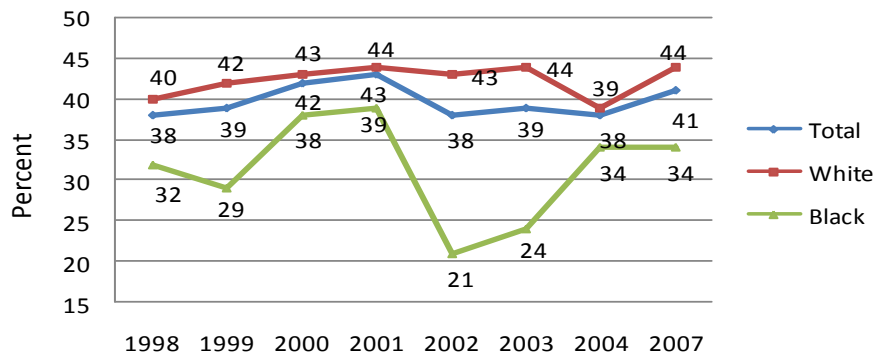
**DID YOU KNOW?..**

**Breastfeeding and WIC, Louisiana 1998-2007**

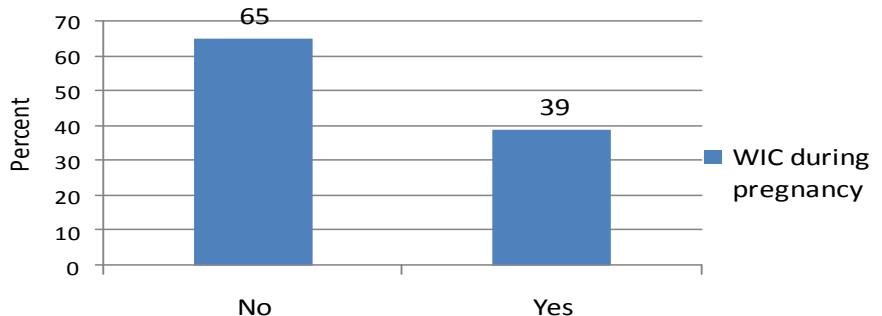
**Figure 1: Trends of breastfeeding initiation, LA 1998-2007**



**Figure 2: Trends of breastfeeding at 4 months, LA 1998-2007**



**Figure 3: Percent of breastfeeding Initiation by WIC participation during pregnancy, LA 2000-04-07**



Data Source: LaPRAMS