

**April—June 2011**  
**Fast Facts**

**Late Preterm Deliveries, Louisiana 2007-2009**

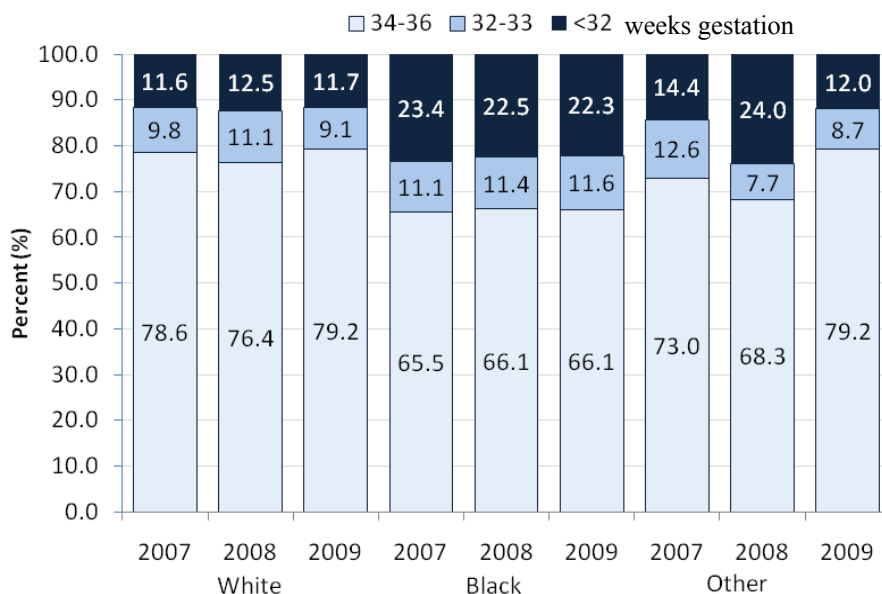
**Key Information and Findings:**

- Late preterm deliveries are births occurring between 34 and 36 weeks gestation
- Late preterm deliveries account for about 8-9% of all live births
- Late preterm deliveries account for about 65-80% of all preterm deliveries (deliveries before 37 completed weeks gestation)
- Women who experienced pregnancy associated hypertension were over twice as likely to deliver between 34 and 36 weeks gestation compared to women who did not experience pregnancy associated hypertension
- Women who reported having had a preterm delivery in the past were over 3 times as likely to deliver late preterm compared to women who did not report a prior preterm delivery
- African American women were 40% more likely to deliver between 34 and 36 weeks gestation compared to white women

**DID YOU KNOW?..**

**Late Preterm Deliveries, Louisiana 2007-2009**

Percent of preterm deliveries occurring during each gestational age range



**Associations with late preterm delivery**

Women delivering at 34-36 weeks gestation were more likely to have:

	Odds Ratio	95% Confidence Interval
Premature Rupture of Membranes (PROM)	5.8	5.0, 6.8
Placenta previa	5.1	3.8, 6.9
Eclampsia	4.4	3.5, 5.5
Previous preterm delivery	3.3	2.8, 3.8
Hydramnios / Oligohydramnios	2.4	2.0, 2.8
Pregnancy associated Hypertension	2.4	2.2, 2.5
Chronic Hypertension	2.2	1.9, 2.5
Diabetes	1.5	1.3, 1.7
Tobacco user	1.3	1.2, 1.4
No first trimester prenatal care	1.1	1.1, 1.2
Black race	1.4	1.4, 1.5
40+ years old	1.4	1.2, 1.6
30-39 years old	1.1	1.0, 1.2
< High school education	1.2	1.2, 1.3

Data Source: Louisiana Vital Records birth certificates