

April - June 2012 Fast Facts

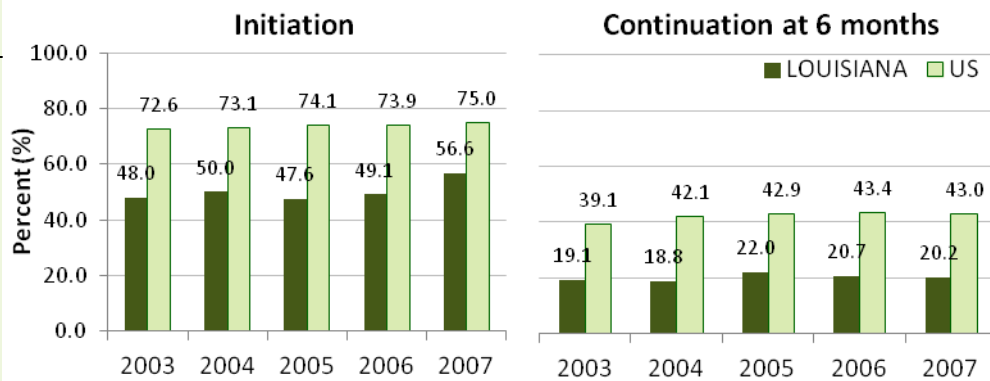
Breastfeeding

- The Healthy People 2020 goal for breastfeeding is to achieve 81.9% initiation and 60.6% continuation at 6 months
- National Immunization Survey data show increased rates of breastfeeding initiation and continuation at 6 months over time for both the US and Louisiana, but considerable work remains to reach Healthy People goals
- In 2007, Louisiana ranked 47th among US states for initiation and 50th for continuation at 6 months
- Louisiana Pregnancy Risk Assessment Monitoring System (LaPRAMS) data indicated a slightly smaller percent of women who initiated breastfeeding in 2007 compared to National Immunization Survey data (53.3% compared to 56.6%)
- The Guided Infant Feeding Techniques (GIFT) program represents one way Louisiana birthing hospitals and facilities can demonstrate their commitment to help support breastfeeding mothers. A list of GIFT certified facilities can be found at www.thegiftla.org
- Breastfeeding initiation was 71% in GIFT certified and 61% in non-certified facilities ($p < 0.05$) in 2009
- Women who delivered in GIFT certified facilities in 2009 were 60% more likely to initiate breastfeeding than women who delivered in non-certified facilities

DID YOU KNOW?..

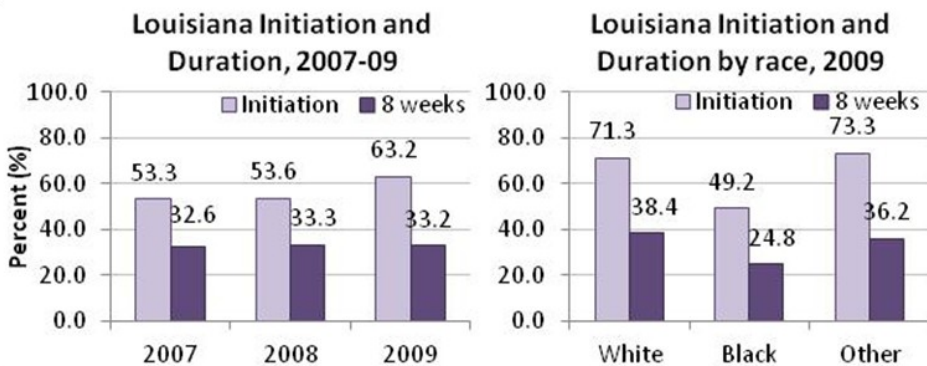
Breastfeeding in Louisiana

Initiation and Duration over time for the US and Louisiana

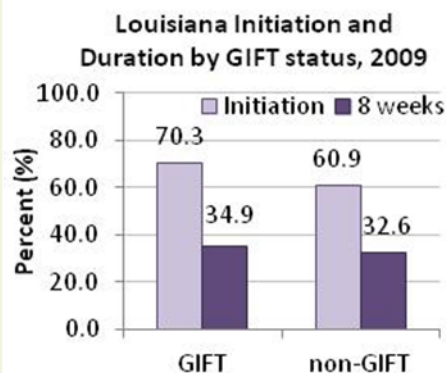


Data Source: National Immunization Survey

Breastfeeding by GIFT program certification, Louisiana 2009



Data Source: LaPRAMS



Data Source: LaPRAMS

OR—Odds ratio; 95% CI = 95% confidence interval

Factors for Initiation	OR	95% CI
GIFT certified	1.61	1.01, 2.56
Race		
Black	0.39	0.27, 0.58
Other	1.16	0.45, 2.99
Education		
< high school	0.23	0.14, 0.37
high school	0.50	0.32, 0.76
Previous live birth	0.68	0.47, 1.00